

# FLUID

EQUIPMENT COMPANY, INC.

*of Georgia*

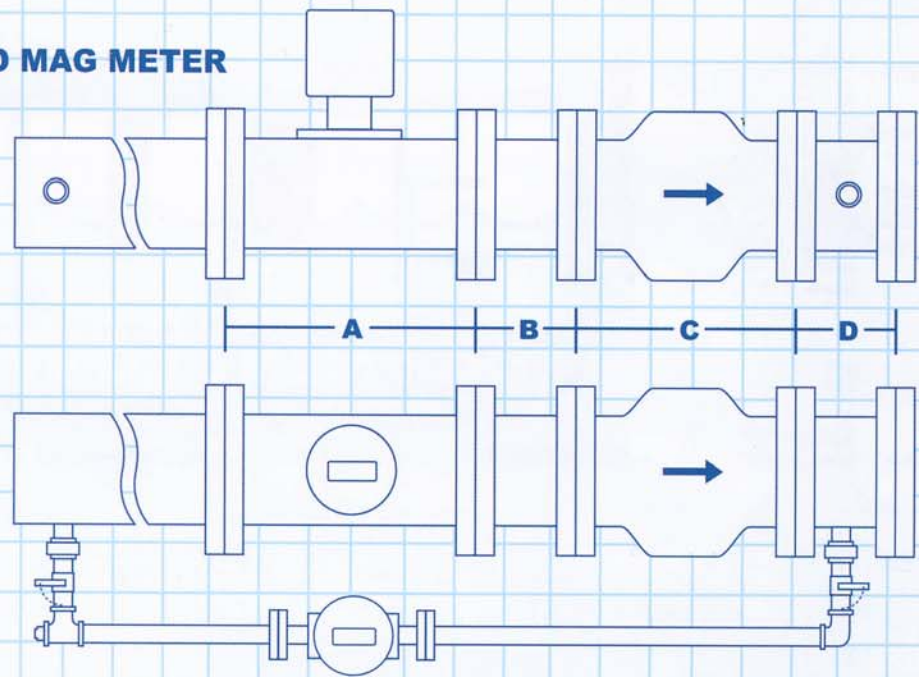


**GOMPOUND MAG METER**

PATENT PENDING

[www.donmcpeak.com](http://www.donmcpeak.com)

## COMPOUND MAG METER



**Compound MAG Meter** – Combines the Most Accurate Flow Meter Technology with Rugged Maintenance Free Operation. Meter accurately measures flows, low & high.

The “Compound MAG Meter”, by Fluid Equipment Co., Inc. (Patent Pending). . . Traditional Compound Meters divide the Flow Stream into Small & Large Flow Ways, to obtain reasonably accurate measurement, over a broad flow range. High Maintenance over time and retreating accuracy has been their downfall.

In a recent statement in Water & Wastes Digest, by the marketing department of the number one provider of cold water flow meters in the USA – quote: “In fact, compound, turbine and fire service metering technology still use the same mechanical designs introduced 40 years ago.”

The Compound Mag Meter utilizes modern electromagnetic flow technology. Once thought to be hard to maintain, is now provided in a robust, long lasting, extremely accurate metering system, furnished with a 3 Year guarantee. **In fact, Compound Mag Meter is provided with built-in Flow Test Mechanism, verifying continuing flow accuracy. This is an Industry First.**

Overall Features Include:

- One moving part – industry proven - long lasting
- No Strainers required
- Accuracy at .2 % to .5% = (2) to (5) gallons / thousand - permanent
- Meters furnished with Certified National Standard flow test
- Equipped with a passive Pulse Output option, for use with AMR Transceivers
- Option for 4-20mA Out Put, with sufficient external power source
- Data Logging, with continuous rollover; 26 Days, 26 Weeks, 26 Months
- Flow Indication along with Totalization – Industry First
- Remote Totalizing/Indicating Registers - read up to 33Ft. above ground
- Self Battery powered (6 Years); Solar Powered, or AC Powered
- Self Flow Testing – Industry First
- Buriable – Meets IP68/6P standards
- WPC & NSF Drinking Water Approval
- OIML R49 International Custody Transfer Approval
- Not limited by size – illustrated through 24”
- Customized lengths to fit special locations

## COMPOUND MAG METER FLOW CHART

Accuracy at flows for each size	.25%	.5%	1%	2%	3%	4%	5%
size	gpm	gpm	gpm	gpm	gpm	gpm	gpm
1"	78	3.74	1.8	.92	.62	.46	.37
1-1/2"	199	11	5.6	2.8	1.9	1.4	1.1
2"	277	18	9.2	4.6	3.1	2.3	1.8
3"	704	56	28	14	9.3	6.9	5.6
4"	1100	74	37	18	12	9.2	7.4
6"	2775	185	92	46	31	23	18
8"	4405	333	166	83	55	42	33
10"	7045	555	277	139	92	69	55
12"	11,011	740	370	185	123	92	74
16"	19,919	1,387	694	347	231	173	139
24"	44,817	2,959	1,480	740	493	370	296

### How to Read Your COMPOUND MAG FLOW CHART

- GPM rates are shown for each size and each accuracy level.
- The Compound MAG Main Line Flow at 2% should fall within the Maximum of the By-Pass Flow

Example: 6" Minimum = 46gpm @ 2%  
 1" Maximum = 78gpm @ .25%

The main line Flow Control Valve will open as this Crossover occurs.

**Note:** The accuracies listed are conservative. Most of the meters employed are flow tested and calibrated at NIST National Flow Labs, and received with accuracies at .2% (yes, point 2%) or better. Flow test documents are furnished with each meter. Accuracies are considered to be permanent, with no required maintenance, for cold water applications.

**TESTING:** Compound Mag Meter has Build-In Test Procedure to verify unit flow accuracy. There is no requirement for outside testing companies or municipality bench testing. It is a built in function of the Compound Mag Meter. Separate Instruction sheet is available on line: [www.donmcpeak.com](http://www.donmcpeak.com)

### Compound Mag Meter - Detail Dimensions

Pipe Size	FL x PE Spool/tapped **	Meter	FL x FL Spool	Valve	FL x FL Tapped	A thru D Length	ALL Gaskets	Total Minimum Length**	Weight Ductile Iron (PVC Option)
		A	B	C	D				
3"	9	7.9	6	6.00	6	25.90	.75	35.65	170
4"	12	9.8	6	7.25	6	43.05	.75	41.80	186
6"	18	11.8	6	9.34	6	51.55	.75	52.30	301
8"	24	13.8	8	12.50	6	64.30	.75	65.05	499
10"	30	17.8	8	15.50	6	77.20	.75	77.95	728
12"	36	19.7	10	14.50	6	86.20	.75	86.95	1019
16"	48	23.6	12	24.75	6	114.35	.75	115.10	2034
24"	72	32.3	12	24.00	6	146.30	.75	147.05	4076

\*Tap is located 4" from end of PE

\*\*Total Length may be extended by increasing the FL x PE unit. Minimum listed lengths are calculated to maintain laminar flow conditions.



70 Mountain Creek Trail  
Social Circle, Georgia 30025

**770-787-0551**

Fax: 770-787-8052

Email: [don@donmcpeak.com](mailto:don@donmcpeak.com)

**[www.donmcpeak.com](http://www.donmcpeak.com)**

FLOW CONTROL AND FLOW MEASUREMENT SPECIALIST