

# WESTFALL

WESTFALL MANUFACTURING COMPANY

16 Peckham Drive

Bristol, RI 02809-2733

Email: [info@westfallmfg.net](mailto:info@westfallmfg.net)

Web-site: [www.westfallmfg.com](http://www.westfallmfg.com)

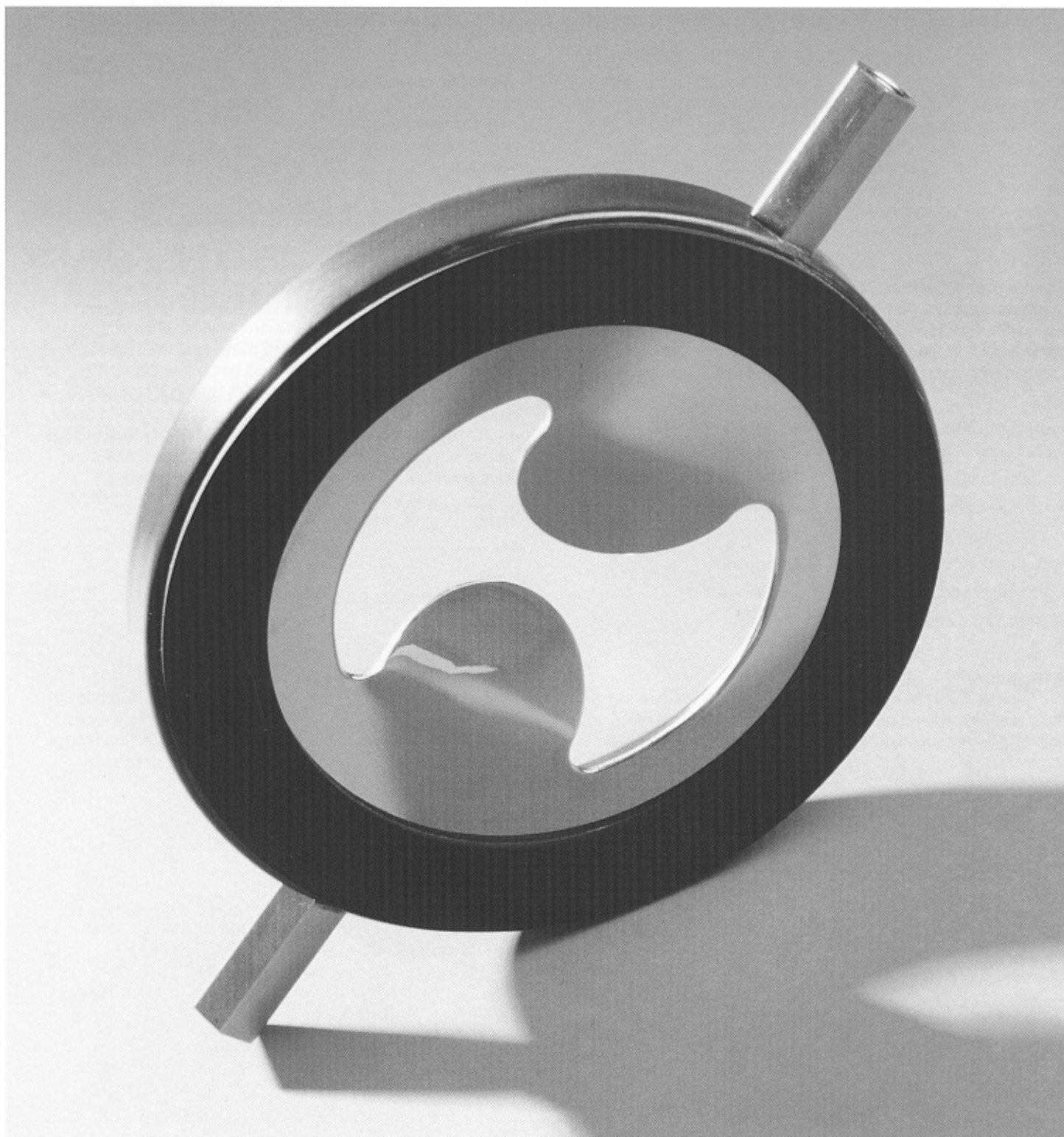
Tel: 401-253-3799

(888) 928-3747

Fax: 401-253-6530

## Static Injection Mixer

Model 2800 US Patent No. 5,839,828



# WESTFALL

## Westfall Static Mixer

### Experience

Westfall Manufacturing Company has extensive experience in the water, wastewater and industrial markets. We have manufactured more than 10,000 Venturi meters since 1965 and more than 2,500 vacuum D.E. filters since 1955. Westfall has been the primary supplier of water treatment components for numerous original equipment manufacturers. We at Westfall are proud of this record of successful applications.

### Standard and Custom Designs and Materials:

Standard materials are Fiberglass Reinforced Vinyl Ester resin body with type 316 stainless steel mixer plate. Other materials are available on request. Special size rings, mixer plates and injection fittings can be fabricated to meet specific requirements.

### Typical Applications:

Typical applications for the Westfall Static Mixers are:

- Water Treatment
- Chemical Blending
- Dissolving Gases
- Contacting
- Polymer Blending
- Flocculant Blending
- Ph Control
- Potable Water
- Waste Water
- Chlorination
- De-Chlorination

### Description:

The Westfall Static Mixer is a motionless static mixer in which fluids are injected and rapidly mixed by a combination of alternate vortex shedding and intense shear zone turbulence.

## Description - Tests - Specifications

### Typical Specifications:

The Static Mixer shall be of a compact ring body design for mounting between two standard pipe flanges. The ring body shall be a minimum thickness of 0.875 inches and shall be fabricated from \_\_\_\_\_.

Ring type neoprene gaskets shall be furnished and adhered to both sides of the mixer body. The mixer plate shall be computer designed to provide a geometric shape which will create the mixing vortices to effectively mix the injected fluid(s) with the main process fluid. The average variation in the process stream of the injected fluid, shall be within 1% of the mean value at 10 pipe diameters downstream of the mixer. The mixing plate shall be no less than 0.125 inches thick and shall be formed from type 316 stainless steel. The mixer plate shall be mounted in a machined cavity on the upstream side of the ring body. The body shall include one or more 316 stainless steel injection fittings. The mixer body and plate materials shall be suitable for handling \_\_\_\_\_ as the process fluid at the rate of \_\_\_\_\_ GPM, and \_\_\_\_\_ PSI. Injection fluids are \_\_\_\_\_.

The injection mixer shall be Westfall's Model 2800.

### Available Sizes:

Mixers can be furnished to fit all line sizes 1/2" thru 48". Contact the factory for other sizes. The standard ring body is 0.875" thick plus two .125" gaskets. Special thicknesses will be made to accommodate oversized fluid injection fittings or other requirements. Contact the factory for details.

# Advantages of The Static Injection Mixer

- Low Cost
- Short Laying Length
- Integral Injection Fittings
- Predictable Mixing
- Easy Installation and Hook-up
- Long Service Life
- No Maintenance Requirements
- No Moving Parts
- Available in Any Material: PVC, FRP, 316 ST.STL., Titanium, etc.

## Information Required for Express Service Quotation:

- Main Pipe Size and I.D.
- Main Line Fluid and Flow Rate
- Main Line Temperature, Pressure and Viscosity
- Quality of Injected Fluids
- Flow Rate, Temperature, Viscosity of Each Injected Fluid
- Material of Mixer Body Ring
- Material of Mixer Plate
- Injection Fitting Material
- Gasket Material
- Other Special Requirements

## Other Westfall Products

- Vacuum Diatomaceous Earth Filter Systems
- Diatomaceous Earth Recovery Flumes
- D.E. and Dry Chemical Feeders
- 3-Way Control Valves
- Rotary Drum Filters
- Venturi Flow Meters
- Rate of Flow Controllers



# WESTFALL

## WESTFALL MANUFACTURING COMPANY

16 Peckham Drive

Bristol, RI 02809-2733

Email: info@westfallmfg.net

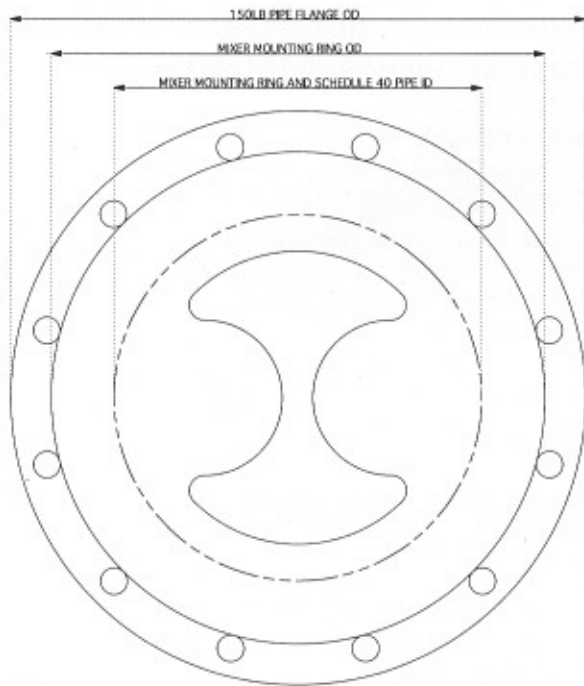
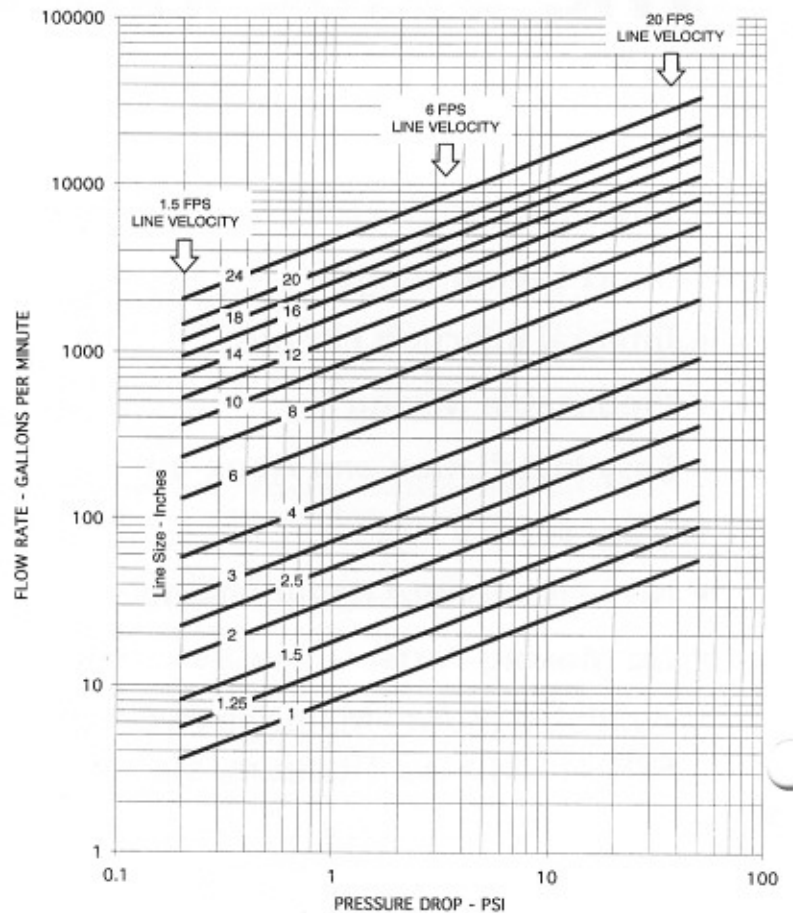
Web-site: www.westfallmfg.com

Tel: 401-253-3799

(888) 928-3747

Fax: 401-253-6530

## Westfall Injection Mixer - Headloss



## 150 Lb. Mixer Dimensions in Inches

NOMINAL PIPE SIZE	MIXER MOUNTING RING AND SCHEDULE 40 PIPE ID	MIXER MOUNTING RING OD	150 LB PIPE FLANGE OD	MIXER PLATE THICKNESS	LAYING LENGTH WITH 1/8" GASKETS AND 1/4" NOZZLES	LAYING LENGTH WITH 1/8" GASKETS AND 1/2" NOZZLES
0.50	0.62	1.88	3.50	0.095	1.25	2.00
0.75	0.82	2.25	3.88	0.095	1.25	2.00
1.00	1.05	2.63	4.25	0.095	1.25	2.00
1.25	1.38	3.00	4.63	0.095	1.25	2.00
1.50	1.61	3.38	5.00	0.095	1.25	2.00
2.00	2.07	4.13	6.00	0.125	1.25	2.00
2.50	2.47	4.88	7.00	0.125	1.25	2.00
3.00	3.07	5.38	7.50	0.125	1.25	2.00
4.00	4.03	6.88	9.00	0.125	1.25	2.00
5.00	5.05	7.75	10.00	0.125	1.25	2.00
6.00	6.07	8.75	11.00	0.125	1.25	2.00
8.00	7.98	11.00	13.50	0.188	1.31	2.06
10.00	10.02	13.38	16.00	0.188	1.31	2.06
12.00	11.94	16.13	19.00	0.250	1.38	2.13
14.00	13.12	17.75	21.00	0.250	1.38	2.13
16.00	15.00	20.25	23.50	0.313	1.50	2.19
18.00	16.88	21.63	25.00	0.313	1.75	2.19
20.00	18.81	23.88	27.50	0.375	1.88	2.25
24.00	22.63	28.25	32.00	0.375	2.25	2.25