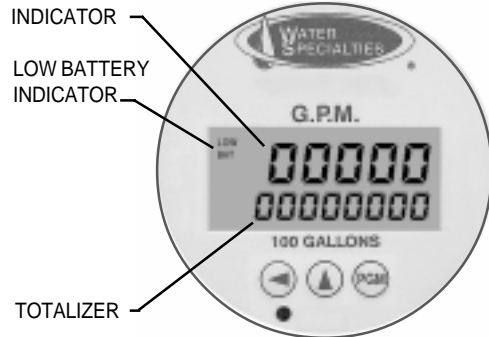




**MODEL OF-12-D**  
**OPEN FLOW METER**  
**SOLID STATE ELECTRONIC PROPELLER METER**  
**DIGITAL INDICATOR - TOTALIZER**  
**SIZES 10" thru 72"**



TYPICAL  
 DIGITAL INDICATOR-TOTALIZER



### DESCRIPTION

**MODEL OF-12-D OPEN FLOW METERS** are designed for accurate metering of ditch turnouts, reservoir outlets, closed conduits or other similar installations. The rigid, light weight construction and simple installation allow easy removal for winter storage or transfer to other locations. The upper mounting plate is equipped with a padlock hasp. The lower bracket has suitable guides for easy installation. An optional revolving mounting bracket, with padlock hasp, is also available. The revolving mounting bracket allows the meter assembly to be raised approximately 2 inches permitting the column to be rotated 180 degrees and easily withdrawn. The revolving mounting bracket is ideal when high velocity flow conditions exist. An optional remote mounting kit with up to 100 feet of cable is available to locate the indicator-totalizer at remote locations.

**INSTALLATION** can be made to any wall or vertical structure which will center the propeller in the flow measuring area. The meter location must have a controlled flow measuring area and a full flow of liquid for proper accuracy. Fully opened gate valves, fittings or other obstructions that tend to set up flow disturbances should be a minimum of ten pipe diameters upstream from the meter. Installations with less than ten pipe diameters of straight pipe require straightening vanes. Meters with straightening vanes require at least five pipe diameters upstream.

**PROPELLER** is magnetically coupled with the electronic sensor through the sealed gearbox. This completely eliminates water entering the meter assembly, and eliminates all moving parts except for the propeller. The propeller is a conical shaped three bladed propeller, injection molded of thermoplastic material resistant to normal water corrosion and deformity due to high flow velocities.

**BEARING** in propeller is a water lubricated ceramic sleeve and spindle bearing system with a ceramic/stainless steel spindle. Dual ceramic thrust bearings, standard on all meters, handle flows in both forward and reverse directions. The bearing design promotes extended periods of maintenance free propeller operation.

**DIGITAL INDICATOR-TOTALIZER** has a non-volatile EEPROM memory to store totalizer count (updated every 60 minutes while running). The indicator dial can be furnished in GPM, CFS, MGD or any standard liquid measuring units with a choice of totalizer measuring units. The display is programmable to update from 0.5 to 5 seconds, and timeout from 1 to 9999 seconds.

**INDICATOR (rate) FUNCTION** is a five digit indicator with .35" tall numbers, programmable with 0 to 4 decimal point place with 0.0001 to 9999 rate scaling and totalizing factors. The calculation method is 1/Tau. It has programmable smoothing of 0 to 99%. The rate zero time is 8 seconds.

**TOTALIZER FUNCTION** is an eight digit totalizer with .20" tall numbers, programmable with 0 to 4 decimal places, and a total scaling factor of 0.0001 to 9999. The totalizer can be reset from the front panel or disabled permanently.

**O-RING SEALS** are used at the meter head and all points where seals are required, making the sensor probe completely immune to any of the corrosive effects of atmospheric moisture or the liquids measured by the meter assembly.

### SPECIFICATIONS

**ACCURACY** Plus or minus 2% of actual flow within the range specified for each meter size.

**TEMPERATURE RANGE** 140° F Maximum. Consult factory for special construction for higher temperatures.

**MINIMUM FLOWS** As shown for each meter size and construction are required for accurate registration. See flow chart.

**MAXIMUM FLOWS** As shown for each meter size and construction are rated for continuous operation. See flow chart.

**INTERMITTENT FLOWS** As shown for each meter size are rated for 10% to 15% of the total time the meter is operating. Consult factory for High Velocity construction when intermittent flows are higher than shown on flow chart and/or when longer operating periods are required.

**MATERIALS** Used in construction are chosen to minimize the corrosive effects of the liquids measured by the meter assembly.

PROPELLER MAGNETS - permanent ceramic type

PROPELLER BEARING - ceramic sleeve type  
 PROPELLER SPINDLE - ceramic coated stainless steel

PROPELLER - injection molded thermoplastic

GEARBOX - cast bronze

SEPARATOR - stainless steel

BOLTS - stainless steel

DROP PIPE - bronze

METER HEAD - cast bronze

MOUNTING BRACKETS - cast bronze

**OPTIONAL EQUIPMENT** Includes a remote mounting kit with up to 100 feet of cable, digital transmitter, revolving mounting frame and a wide range of controls and instruments for indicating, totalizing and recording flow data for each meter. Special constructions and materials are available upon request.

**ORDERING INFO** Must be specified by the customer and includes: "A" dimension (see back of data sheet)

Pipe I.D.

Minimum & maximum flow ranges

Temperature of meter environment

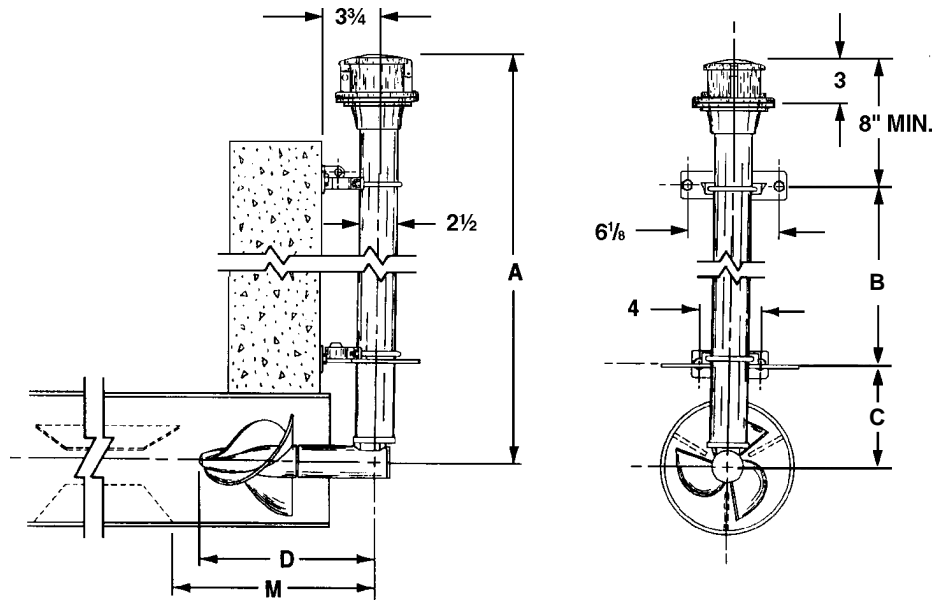
Indicator scale and units

Totalizer dial units

Type of materials and construction

Optional equipment desired

**MODEL OF-12-D**  
 OPEN FLOW METER  
 SOLID STATE ELECTRONIC PROPELLER METER  
 DIGITAL INDICATOR-TOTALIZER  
 SIZES 10" thru 72"



METER & PIPE SIZE	FLOW RANGES, GPM			DIMENSIONS					SHIPPING WEIGHT POUNDS**
	MIN.	MAX.	INT.	A*	B	C	D	M	
10	300	2000	3000				11½	13½	80
12	400	3000	3500				11½	13½	80
14	500	4000	4500				11½	13½	80
16	600	5000	6000				11½	13½	80
18	800	6000	7500				11½	13½	80
20	900	8000	9000				11½	13½	80
24	1000	10000	13500				11½	13½	80
30	1800	15000	21000				11½	13½	80
36	2000	20000	30000				11½	13½	80
42	3000	30000	40000				11½	13½	80
48	5500	35000	50000				11½	13½	80
54	6500	45000	55000				11½	13½	200
60	7500	60000	80000				11½	13½	200
66	8500	75000	95000				11½	13½	200
72	9500	90000	115000				11½	13½	200

\* NOTE: Model OF-12-D meters are equipped with a 6 foot "A" dim. unless otherwise specified.

\*\* NOTE: Shipping weights are approximate. Actual weight depends upon "A" dim.

**WATER SPECIALTIES**

3255 WEST STETSON AVENUE • HEMET, CALIFORNIA 92545-7799 USA  
 TEL: 909-652-0591 • FAX: 909-652-5592

Visit our Website: [www.waterspecialties.com](http://www.waterspecialties.com)  
 E-Mail: [info@waterspecialties.com](mailto:info@waterspecialties.com)

Copyright © 2001 Water Specialties All printed material should not be changed or altered without permission of Water Specialties. The published technical data and instructions are subject to change without notice. Contact your Water Specialties representative for current technical data and instructions.